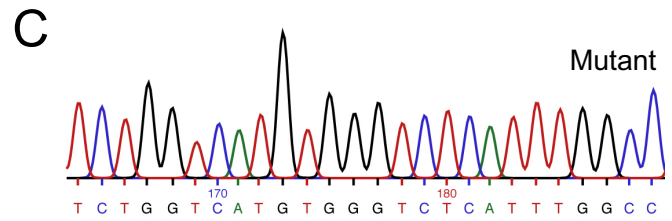
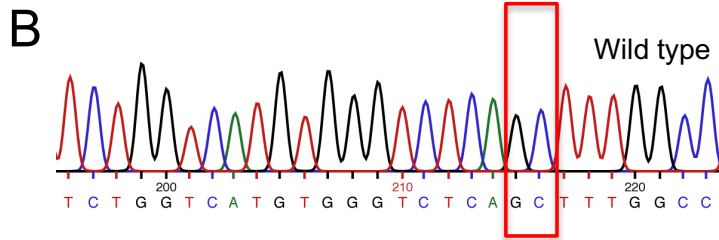


Figure 2

A *Oca2* DNA



D Forward primer 1
(for genotyping wild type allele)

5' -CTGGTCATGTGGGTCTCAGC-3'
 5' -CATTCTGGTCATGTGGGTCTCAGCTTTGGCCT-3' *Oca2*⁺
 5' -CATTCTGGTCATGTGGGTCTCA--TTGGCCT-3' *Oca2*⁻
 5' -TCTGGTCATGTGGGTCTCATT-3'

Forward primer 2
(for genotyping mutant allele)

Reverse primer
(for both reactions)
 5' -GAAGGGGATGTTGTCTATGAGC-3'

